



JAPAN BY LAND & SEA WITH AZAMARA CRUISES

Classic Cruising Tour | 24 Days | Physical Level 1

TOKYO – NAGANO – KYOTO – KOBE – KOCHI – HIROSHIMA – KITAKYUSHU – SASEBO –
BUSAN – SAKAIMINATO – KANAZAWA – NIIGATA – AKITA – AOMORI

Join one of our most extensive tours of Japan that combines land and cruise touring into one and discover classic sights and key cultural activities. Featuring modern cities, historical sights and beautiful landscapes, Azamara Cruises: Japan by Land & Sea ensures you get the most out of your trip.

- Feel the rush of Tokyo
- Admire beautiful Mount Fuji
- Be charmed by Kyoto
- Reflect in Hiroshima
- Cruise on the luxurious Azamara Pursuit
- Discover picturesque Busan

TOUR MAP



TOUR INCLUSIONS:

- Return international economy flights, taxes and current fuel surcharges (unless a land only option is selected)
- 13 nights Azamara cruise on Azamara Pursuit
- All accommodation
- Meals as stated (*if dining on board throughout*) – 21 breakfasts (B), 20 lunches (L), 21 dinners (D)
- All sightseeing and entrance fees, transportation and transfers pre and post cruise
- English speaking National Escort (if your group is 10 or more passengers) or Local Guides pre and post cruise
- Visa fees for New Zealand passport holders
- Specialist advice from our experienced travel consultants
- Comprehensive travel guides
- Safe and secure with IATA

Pre and post cruise, the only elements or aspects you may have to pay for are personal expenditures e.g., drinks, optional excursions or shows, insurance of any kind, tipping, early check in or late checkout and other items not specified on the itinerary.

During the cruise, your meals on board will be included in the main dining areas, however, should you wish to dine in any of the speciality restaurants not included in your cruising package, you will be required to pay for these locally.

In addition, if you opt to dine off the ship, these meals will also be paid for locally, and please note you will not be refunded for meals missed on board. Excursions are also available to book with your cruise reservation at your own expense.

CLASSIC CRUISING TOURS:

These tours are designed for those who wish to see the iconic sites and magnificent treasures of Japan on an excellent value group tour whilst travelling with like-minded people combined with a cruise. The tours are on a fully-inclusive basis pre & post cruise, so you will travel with the assurance that all your arrangements before and after your cruise are taken care of. You will be accompanied by our dedicated and professional National Escorts and local guides, whose unparalleled knowledge will turn your holiday into an unforgettable experience.

JOINING YOUR TOUR:

For travellers that have booked a 'Land & Cruise Only' tour with no international flights, please note the price includes your arrival/departure airport transfers if you are arriving on the start and departing on the conclusion date of your tour, or when booking pre/post night accommodation with Wendy Wu Tours.

Join the tour on Day 2 in Tokyo (arrive into Tokyo Narita airport) and end the tour on Day 23 in Tokyo. Please refer to your final itinerary for more specific meeting instructions pertaining to your departure.

ITINERARY CHANGES:

We intend to adhere to the day-to-day itinerary as printed; however, the order of events or sightseeing may change as we look to improve our tours, or as dictated by local conditions. In these circumstances, we will endeavour to make the best possible arrangements whilst maintaining the integrity of your trip. Similarly, while cruise liners always endeavour to adhere to the published itineraries, they may be changed at the discretion of the captain due to weather advisories, port traffic, and any other unforeseeable circumstances.

PHYSICAL LEVEL 1:

Our tours come with a physical rating to guide you in selecting a holiday that suits your comfort level. Joining any of our tours involves independent mobility and the ability to stay active throughout the day, which is essential for fully enjoying the unique charm of each destination.

'Japan by Land & Sea' falls under a Physical Level 1 category. A reasonable level of fitness is required, and you should expect to be on your feet for much of the day. You will be getting on and off coaches, trains or boats and walking around the sights, often including steps, plus occasional longer walks.

- There will be sightseeing on foot for both short and extended periods of time, often on uneven surfaces

- You will be required to get on and off small boats without assistance
- You will be required to board the cruise ship without assistance and get on and off at ports if you wish to disembark the ship

Of course, our National Escort and local guides will always endeavour to provide the highest level of service and assistance; however, they cannot be expected to cater for customers who are unfit to complete the itinerary.

DETAILED ITINERARY

Day 1-2 Tokyo

Meals: D

Fly overnight to the ultimate 24-hour city of Tokyo, Japan's capital city. On arrival, you will be met by an English-speaking representative and transfer to your hotel.

Please note: Early check-in is not included. If your flight arrives in the morning and you wish to arrange this, please speak to your reservation's consultant. You will be transferred by shared coach with other passengers who are not part of a Wendy Wu Tour. If you are on a shared bus transfer, you may have to walk for a few minutes to get to your hotel. Transfers will differ depending on group size.



Destination Information

Tokyo – One of the world's most cutting-edge capital cities, Tokyo is a city of contrasts, famous for its neon lit landscape, towering skyscrapers, peaceful shrines and lovingly tended gardens. Although long the political and cultural centre of Japan, Tokyo became the official capital when the Meiji Emperor moved it to Tokyo in 1867.

Day 3: Explore Tokyo

Meals: B, L, D

After breakfast, embark on a full day tour of Tokyo. Begin with a visit to Sensoji Temple, arguably one of Tokyo's most popular and photographed temples and the oldest Buddhist temple in the capital. Go on to wander down Nakamise Shopping Street, a centuries-old souvenir street, where you will be able to enjoy some shopping opportunities for that perfect souvenir or pick up a local delicacy as there's plenty of scrumptious snacks too.

Next, participate in a sushi making class where you'll enjoy your own creations for lunch before heading to Tokyo Skytree to admire the panoramic views.



This afternoon, pay a visit to the Shibuya Crossing for a quick photo stop followed by the Meiji Shrine, one of the most famous Shinto shrines in Japan and dedicated to Emperor Meiji. Wander through Ginza before returning to your hotel.

You will be on your feet for approximately 4-5 hours during your touring in Tokyo.

Destination Information

Tokyo Skytree – The tallest structure in Japan, Tokyo Skytree is predominantly a television and radio broadcast tower and is earthquake resistant.

Sensoji Temple – Sensoji Temple is an ancient Buddhist Temple and the oldest in Tokyo. The temple was originally founded in the 7th century. The temple adorns an image of the Buddhist Goddess Kannon, who was said to have been rescued by two fishermen from the Sumida River in Tokyo.

Meiji Shrine – Meiji Shrine is a Shinto shrine dedicated to Emperor Meiji and his wife Empress Shoken. The shrine is located in an evergreen forest within in the busy city and consists of 120,000 trees which were donated by people from all over Japan when the shrine was established.

Day 4: Discover Nagano**Meals: B, L, D**

Today, travel approximately 3 and a half hours to Nagano with your English-speaking guide, by private vehicle and pay a visit to the Jigokudani Monkey Park, home of the famous Japanese Snow Monkeys. Accustomed to humans, the monkeys can be observed from very close, and almost completely ignore their human guests

Please note, from the bus park, you will walk approximately 30-minutes along potentially snowy paths on an incline, to the main pool where the monkeys bathe.



After, pay a visit to Zenkoji temple, a 7th Century Temple before returning to your hotel where you will enjoy an onsen hot spring bath and a traditional Japanese kaiseki dinner at your ryokan.

Please note: You will need to prepare a small bag for your overnight stay in Nagano. Your main luggage will be transferred separately to your hotel in Kyoto.

Destination Information

Nagano – The host city of the 1998 Winter Olympics, Nagano is the main access point for the Japanese Alps.

Jigokudani Yaen-Koen – Home to Japanese Macaques, also known as Snow Monkeys, Jigokudani literally means ‘hell’s valley’. It is named this because of the steam and boiling water that bubbles out of small crevices in the ground. It is in the baths of this hot water that the resident Japanese Macaques like to soak. The monkeys live in large social groups, and it can be quite entertaining to watch their interactions.

Day 5: Mount Fuji to Kyoto**Meals: B, L, D**

After breakfast this morning, transfer approximately 4 hours by private coach/vehicle with your English-speaking guide to Mt Fuji, where your first stop will be Oishi Park, which offers great views of Mt Fuji (weather dependent).

In case of bad weather, you will visit the Mt Fuji World Heritage Centre instead.

Lunch today will be at a local restaurant before heading to Hakone to board a mini cruise on Lake Ashi. Afterwards, take the Komagatake Ropeway cable car up to the viewpoint on Mt Komagatake where you will have the chance to admire the unforgettable views of Mt Fuji and Lake Ashi below (weather dependent).

Finally, you will be transferred to the train station where you will board the bullet train to Kyoto, a journey of approximately 2 hours and 30 minutes. On arrival, transfer to your hotel for check-in and spend the remainder of the day at leisure.

Destination Information

Mt Fuji – At 3,776m, Mount Fuji is the highest of Japan's mountains and remains an iconic symbol of the country. Mount Fuji is notoriously shy and is often enveloped by clouds.

Lake Ashi – Formed after Mount Hakone's last eruption 3000 years ago, Lake Ashi is the symbol of Hakone and on a clear day offers spectacular views of Mount Fuji in the distance.

Komagatake Ropeway – Komagatake Ropeway goes from the shore of Lake Ashi to near the Komagatake peak of Mount Hakone. When the weather and visibility is good, panoramic views of Lake Ashi and Mount Fuji can be enjoyed.



Day 6: Kyoto**Meals: B, L, D**

Start the day with a guided tour exploring some of the city's highlights. We will begin with a visit to the Fushimi Inari Shrine, famous for its corridors of torii gates, followed by a trip to the Gekkeikan Okura Sake Museum (or local beer factory).

Enjoy a Sukiyaki lunch at a local restaurant, and then spend some time visiting the Kiyomizu Temple, founded in the 8th century and situated halfway up the Otowayama Hill allowing for stunning views of Kyoto. You will spend 1 and a half hours on foot exploring the temple.



You will walk up part of the mountain and the incline allows a steady-paced walk around 15 minutes with flat road and steps to reach the torii gates.

Due to the limited space at Fushimi Inari Shrine coach parking, you may need to walk from coach parking for 15 minutes. You will be on your feet for approximately 3-4 hours today.

Destination Information

Kyoto – Kyoto was the ancient capital of Japan for approximately 1,000 years until 1867 when it was moved to Tokyo. Many national treasures can be found in Kyoto and in nearby Nara, including old shrines and temples, screen paintings, beautiful gardens, and statues of Buddha.

Fushimi Inari Shrine – An important Shinto shrine in southern Kyoto, Fushimi Inari is most famous for its thousands of vermillion torii gates which form a network of tunnels around the main shrine buildings. The shrine itself is dedicated to Inari, the Shinto god of rice. There are many fox statues in the grounds of the shrine as foxes are thought to be Inari's messengers.

Kiyomizu – Meaning 'Pure Water Temple', the 16th century Kiyomizu Temple is one of the most celebrated temples of Japan and houses the Jishu Shrine dedicated to the deity of love. A highlight is the Hondo's veranda which is perched over the hillside, offering spectacular woodland vistas.

Day 7: Kyoto**Meals: B, L, D**

Enjoy breakfast at your hotel before enjoying another day of sightseeing in Kyoto with your English-speaking guide by private vehicle.

Start with a visit to the beautiful Kinkakuji Temple, also known as the "Golden Pavilion" which was originally built as a retirement villa for the Shogun but, at his request, became a Buddhist Temple after his death.



Continue on to Ryoanji, a Zen temple that boasts the most famous rock garden in Japan, before enjoying lunch at a local restaurant. After, enjoy a visit to the Arashiyama Bamboo Forest and the Tagetsukyo bridge.

Later this evening, enjoy a Japanese style kaiseki dinner at a local restaurant before returning to your hotel.

Destination Information

Kinkakuji Temple (Golden Pavilion) – Kinkakuji Temple is a Buddhist temple and is an excellent example of Japanese garden design. The structure is a brilliant golden hue colour and is very minimalistic.

Ryoanji Temple – Ryoanji Temple is a Zen temple renowned for its garden, which features a dry, sand landscape with large rocks and smooth pebbles.

Day 8: Embark Azamara cruise in Kobe

Meals: B, L, D

Enjoy breakfast at your hotel before checking out.

You will be met by your English-speaking assistant and transferred privately to the port of Kobe, a journey of approximately 1 and a half hours.

Upon arrival, board the Azamara Pursuit, where your cruise adventure begins!



Destination Information

Kobe – Located across the bay from Osaka, Kobe is the seventh largest city and the third largest port city in Japan and remains a hub for Japan's international trade.

Day 9: Cruising – Kobe, Japan

Meals: B, L, D

Today will begin at port before you set sail and enjoy the scenic views that surround you.

Whilst onboard, enjoy the amenities the Azamara Pursuit cruise ship has to offer. Onboard activities available on the Azamara Pursuit include trivia contests, dance lessons, entertaining shows that feature a talented cast of singers and much more.

During your time here, you will also be able to benefit from the onboard lounges, bars and eateries as well as the range of shopping facilities, selling a range of items, from fine jewelry to fragrances and clothing.



Day 10: Cruising - Kochi**Meals: B, L, D**

Today you will dock in the port of Kochi. Disembark the cruise ship and enjoy a day at your leisure or choose from a range of optional excursions, before returning to your ship later in the day for your onward journey.

Please note: Any excursions on this day will be at your own expense. You can book your shore excursions in advance or during your time onboard the Azamara Pursuit cruise ship.

Please note: Your meals are included on board the ship. If you disembark the cruise, any meals on this day will be at your own expense.

**Destination Information**

Kochi – Surrounded by stunning mountains and the Pacific Ocean, Kochi is home to a wide variety of stunningly unique attractions, including the Chikurinji Temple, over 1300 years old, the Hirome Market, offering a number of Kochi's most renowned dishes as well as Katsurahama Beach, a crescent-shaped beach that has long been a popular destination to view the moon.

Kochi Castle – **No** visit to Kochi would be complete without exploring the Kochi Castle, built over 400 years ago and remains as one of the last 12 castles in Japan to still have its original main keep.

Day 11: Cruising - Hiroshima**Meals: B, L, D**

Your cruising adventures continue to Hiroshima, where the ship will dock, enjoy a day at your leisure or choose from a range of optional excursions.

Later continue your cruising journey through Japan.

Please note: Any excursions on this day will be at your own expense. You can book your shore excursions in advance or during your time onboard the Azamara Pursuit cruise ship.

Please note: Your meals are included on board the ship. If you disembark the cruise, any meals on this day will be at your own expense.

**Destination Information**

Hiroshima – An atomic bomb was dropped over Hiroshima on 6th August 1945, and the city's name became famous worldwide for this unenviable distinction. The destructive power obliterated nearly everything within a 2km radius. The city has been rebuilt and has risen phoenix-like from the ashes with destroyed sites of historical heritage reconstructed.

Peace Memorial Park and Museum – The Peace Memorial Park and Museum is one of the most prominent features of the city. The trees, lawns and walking paths are in stark contrast to the surrounding downtown area. Before the bomb, this area was the political and commercial heart of the city which is why it was chosen as the target. The museum focuses on the events of August 6th and the ensuing outcome for the residents.

Day 12: Cruising - Kitakyushu**Meals: B, L, D**

Dock at Kitakyushu, enjoy a day at your leisure or choose from a range of optional excursions.

Please note: Any excursions on this day will be at your own expense. You can book your shore excursions in advance or during your time onboard the Azamara Pursuit cruise ship.

Please note: Your meals are included on board the ship. If you disembark the cruise, any meals on this day will be at your own expense.

**Destination Information**

Kitakyushu – Located east of Fukuoka, Kitakyushu is one of Japan's leading manufacturing centres and serves as a gateway between the northern island of Honshu and Kyushu for trading.

Kokura Castle – The Kokura Castle, which was once home to the Ogasawara family, who ruled the area in the 17th century, was tragically burnt down in 1866 during the war between the Kokura and Choshu clans. Since, the castle has been reconstructed to the stunning white structure that it is today and has become a pivotal symbol of city, with it being the only standing castle keep in Fukuoka Prefecture.

Day 13: Cruising - Sasebo, Nagasaki**Meals: B, L, D**

Dock in the port of Sasebo, enjoy a day at your leisure or choose from a range of optional excursions, before returning to your ship for your onward journey.

Please note: Any excursions on this day will be at your own expense. You can book your shore excursions in advance or during your time onboard the Azamara Pursuit cruise ship.

Please note: Your meals are included on board the ship. If you disembark the cruise, any meals on this day will be at your own expense.



Destination Information

Sasebo – Sasebo, the second largest city in Nagasaki prefecture, started as a local fishing village and later became a U.S. Navy base after the end of World War II. Today, Sasebo is home to an abundance of cultural influences from the West, this has translated into the city's food, with a local specialty being the Sasebo Burger, a conventional beef burger with bacon, lettuce and tomato with a twist, as each shop offers its own variation.

Sasebo is also the unexpected home of the Dutch-themed theme park, Huis Ten Bosch, located in the South, and finished with Dutch-style architecture, tulips (when in season) and more.

Day 14: Cruising - Busan, South Korea

Meals: B, L, D

Your cruising journey continues to Busan, the largest port city in South Korea, which you will be able to explore at your own pace, or choose from a range of optional excursions.

Please note: Any excursions on this day will be at your own expense. You can book your shore excursions in advance or during your time onboard the Azamara Pursuit cruise ship.

Please note: Your meals are included on board the ship. If you disembark the cruise, any meals on this day will be at your own expense.



Destination Information

Busan – With over 3.6m people, Busan is South Korea's second largest city and the largest seaport. However, the city is full of character and is known for its beaches, mountains and temples. Because Busan was not captured during the Korean War, it gives a glimpse of Korea before the 1950s in a way that other places don't.

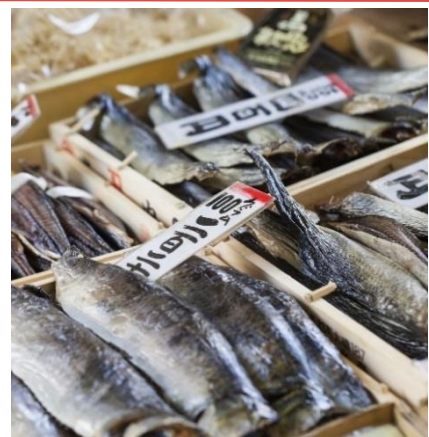
Day 15: Cruising - Sakaiminato

Meals: B, L, D

Sail back to Japan and port in Sakaiminato, where you will be able to explore at your own pace, as today is also at leisure, or choose from a range of optional excursions.

Please note: Any excursions on this day will be at your own expense. You can book your shore excursions in advance or during your time onboard the Azamara Pursuit cruise ship.

Please note: Your meals are included on board the ship. If you disembark the cruise, any meals on this day will be at your own expense.



Destination Information

Sakaiminato – An active fishing port and the childhood home of renown manga artist Shigeru Mizuki, Sakaiminato provides an off the beaten track view of Japan. Statues, murals and shops dedicated to the late manga artist are in abundance throughout the city. Here you will also find the Sakaiminato fish market, with the city being Japan's largest producer of crab.

Day 16: Cruising - Kanazawa

Meals: B, L, D

Today you will dock in Kanazawa. Disembark the cruise ship and enjoy a day at leisure, exploring all the city has to offer, or choose from a range of optional excursions, before returning to your ship for your onward journey.

Please note: Any excursions on this day will be at your own expense. You can book your shore excursions in advance or during your time onboard the Azamara Pursuit cruise ship.

Please note: Your meals are included on board the ship. If you disembark the cruise, any meals on this day will be at your own expense.



Destination Information

Kanazawa – Kanazawa is the capital of the Ishikawa Prefecture and is known for its beautiful samurai and geisha districts, as well as its stunning Kenroku-en Garden.

Day 17: Cruising - Niigata

Meals: B, L, D

Today, arrive at Niigata, a city known for its high-quality sake (Japanese rice wine), mochi (rice cakes) and arare (Japanese crackers). Explore the city at your own pace or choose from a range of optional excursions at your own expense.

Please note: Any excursions on this day will be at your own expense. You can book your shore excursions in advance or during your time onboard the Azamara Pursuit cruise ship.

Please note: Your meals are included on board the ship. If you disembark the cruise, any meals on this day will be at your own expense.



Destination Information

Niigata – One of Japan’s leading agricultural cities, Niigata is a host of natural splendour. The city is famed for its skiing in Winter at the Echigo-Yuzawa ski resort, the scenic beaches and mountains that can be explored in the Summer to the hot springs available all year round.

Day 18: Cruising - Akita

Meals: B, L, D

Port in Akita, where you will be able to explore at your own pace or choose from a range of optional excursions at your own expense.

Please note: Any excursions on this day will be at your own expense. You can book your shore excursions in advance or during your time onboard the Azamara Pursuit cruise ship.

Please note: Your meals are included on board the ship. If you disembark the cruise, any meals on this day will be at your own expense.



Destination Information

Akita – Akita is where you will find the well-preserved samurai district within the town of Kakunodate, a formal castle town, that once houses as many as eighty samurai families and serves as a reminder of Japan’s feudal past. The city is also known for its high-quality sake, the numerous onsen facilities available and for its snow.

Day 19: Cruising - Aomori

Meals: B, L, D

Your cruising journey continues to Aomori, north of Honshu, Japan’s largest island, where you will be able to explore at your own pace, or chooses from a range of optional excursions at your own expense.

Please note: Any excursions on this day will be at your own expense. You can book your shore excursions in advance or during your time onboard the Azamara Pursuit cruise ship.

Please note: Your meals are included on board the ship. If you disembark the cruise, any meals on this day will be at your own expense.



Destination Information

Aomori – Aomori City is the northernmost prefectural capital city on Honshu, Japan's main island, best known for its spectacular Nebuta Matsuri summer festival.

Day 20: Cruising**Meals: B, L, D**

Spend today at sea enjoying what your cruise ship Azamara Pursuit has to offer.

Please note: You will be requested to leave your bags outside your cabin this evening. This allows the cruise team to collect your luggage in the early morning ahead of your disembarkation, without disturbing you in the early hours.

**Day 21: Disembark Azamara Cruise in Tokyo****Meals: B, L, D**

Your cruise concludes as you reach Yokohama cruise port today, where you will be met by an English-speaking guide.

Transfer to your hotel and spend the remainder of the day at leisure.

**Day 22: Nikko****Meals: B, L, D**

After breakfast, meet your English-speaking guide and travel to the ancient city of Nikko to experience its history and local delicacies.

Cross the scenic Shinkyo Bridge for a quick photo opportunity before enjoying a 'yuba' lunch: a vegetarian dish unique to Nikko.

Next, visit the grand Toshogu Shrine, built as a mausoleum for the founder of the Tokugawa Shogunate, and now a UNESCO World Heritage Site.



Afterwards, head to the beautiful Taiyuin-byo, another UNESCO World Heritage Site, located in the middle of a peaceful forest before transferring back to your hotel in Tokyo, a journey of approximately 2 hours.

Destination Information

Nikko – Nikko is best known for its vast and rich nature as well as famous sightseeing spots, including historical shrines and temples. Many people visit Nikko for its distinctive mystical atmosphere as it used to be the centre of Shinto and Buddhist mountain worship for many centuries.

Toshogu Shrine – Toshogu Shrine is the final resting place of the founder of the Tokugawa Shogunate that ruled Japan for over 250 years until 1868. The extravagantly decorated shrine complex has more than a dozen buildings set in a beautiful forest. Numerous wood carvings and large amounts of gold leaf were used to decorate the buildings in a way not seen elsewhere in Japan, where simplicity was traditionally stressed in shrine architecture.

Taiyuin-byo – With architectural influences from China, the Taiyuin-byo Iemitsu Mausoleum is dedicated to the third Shogun of Japan, Iemitsu. The site houses structures that have been registered as National Treasures and features five gates, including a vermilion coloured Nioman Gate at the entrance.

Day 23 -24: Depart Tokyo

Meals: B

This morning is free at leisure before transferring to the airport for your return flight home.

Please note: Only breakfast is included today. Late check-out is not included. If you wish to book a late check-out for your final day in Tokyo, please contact our reservations department who can confirm additional pricing and make this arrangement for you, subject to availability at the hotel.

Transfers: In the event that your flight departs outside of the majority group departure time, you will be transferred to the airport by a shared coach (not with other Wendy Wu Tours passengers). If you are on a shared coach transfer, you may have to walk for a few minutes to get to the coach.



PLEASE INFORM OUR RESERVATIONS TEAM OF ANY ALLERGIES AND/OR SPECIAL DIETARY REQUIREMENTS AT TIME OF BOOKING.

TRAVEL INFORMATION

VISAS:

Please be advised that your passport must have at least six months validity left on it when you arrive back into New Zealand. Visas are not required for New Zealand passport holders for entry into Japan or South Korea.

At the time of booking Visa conditions may have changed, currently no visa is required for New Zealand Passport holders. Your travel consultant will inform you if any changes are applicable prior to your departure.

INSURANCE:

It is a condition of booking Cruise & Tour that you take out suitable travel insurance. You must provide us with the name of your insurer, policy number and their 24-hour emergency contact number when you book with us or as soon as possible thereafter.

Wendy Wu Tours cannot in any way be made liable for any additional cost incurred by the customer on any tour due to the customer not having adequate travel insurance. We also encourage all customers to take a copy of their travel insurance documents (especially relevant international contact numbers) with them while on tour. We advise that you check the inclusions and procedures for lodging claims prior to your departure. These documents should be stored separately from the original.

CRUISE – AZAMARA PURSUIT:

Your boutique hotel at sea, the Azamara Pursuit is a mid-sized ship that offers a vast range of amenities, including seven restaurants, cafes, and lounges as well as a refreshing pool, sun-drenched decks and a revitalizing spa.

Boarding Procedures: Departure times may vary and be as early as noon, so you are encouraged to allow plenty of time to get to the port on the day of boarding. Please note, all boarding times are noted in your travel documents. Priority boarding is available for guests staying in suites.

Government regulations require Azamara to submit final departure manifests. You must board the ship at least 90 minutes prior to our scheduled departure time. If you fail to check in at least 90 minutes before our scheduled departure, this constitutes a "no-show" and will result in an automatic cancellation of your booking.

Cruise Schedule: While we do our best to adhere to our published itineraries, they may be changed at the discretion of the captain due to weather advisories, port traffic, and any other unforeseeable circumstances.

Dining: Please note, there are no set menus onboard the cruise ship, instead, you will have the opportunity to dine at your choice of restaurant included in your package and have the option to upgrade your package whilst onboard to dine in the various speciality restaurants.

Your package also includes soft drinks and alcoholic beverages whilst onboard your cruise. There is the option to upgrade your drinks package on your Guest Account or on your cruise.

Onboard Dress Code: In keeping with the friendly yet sophisticated onboard environment, guests are encouraged to keep a “resort casual” dress code.

Please note, bare feet, tank tops, caps, bathing suits, casual shorts, and torn jeans are not allowed in the dining room or specialty restaurants. When dining at Windows Café, guests must wear footwear and a cover-up or shirt.

Formal evening wear is not expected nor required in any restaurants. If you prefer to dress more formally, you are welcome to do so.

Tipping: On board gratuities are included in your trip cost.

Downloadable Luggage Tag: Luggage tags will be available to download through your personal cruise account.

Please note: While we do our best to adhere to our published itineraries, they may be changed at the discretion of the captain due to weather advisories, port traffic, and any other unforeseeable circumstances.

PORTERAGE:

Pre and Post Cruise - Please be aware that portage is not included on this tour. You will therefore need to be able to handle your own luggage within the hotel and when using transportation like trains and coaches.

Cruise - Portage service is included onboard the Azamara Pursuit Cruise Ship. Please note, you will be able to leave your luggage outside your cabin door on the last night of your cruise, staff will then be able to make arrangements for your luggage, ready for disembarkation early next morning. Please also note, it is customary to tip for the portage service.

TIPPING POLICY PRE & POST CRUISE:

Tipping while on holiday is common in most parts of the world and South Korea is no exception, Although tipping in Japan is not customary, if you feel you have received an excellent service, please feel free to tip your guide at your discretion.

However, it is not always clear who it is appropriate to tip and how much. Furthermore, travellers may not have the right amounts of cash available at the right time. In order to avoid any inconvenience, Wendy Wu Tours operates a tipping policy where a stated amount is given to your National Escort at the beginning of your tour and tips are disbursed to local guides and drivers throughout your tour. The amount is designed to be at a reasonable level for travellers while being fair to the local people and includes a gratuity for the National Escort.

If you are travelling in a smaller group with local guides only, then tipping is paid in each destination. To be fair to the guides we ask for slightly higher amounts per traveller with small groups.

We generally find that most customers appreciate the convenience of our tipping policy, but we do recognize that it may not suit everyone. However, as this is a group tour, we ask that everyone follows the same protocol to be fair to other group members and to ensure smooth operation of your tour.

On Board Azamara Pursuit: On board Gratuities are included.

EXCHANGING CASH:

Money - In New Zealand exchanging money prior to departure can be done at money exchanges, or at international airports. We recommend you carry cash in local currency, along with any credit/debit cards. ATMs are widely available in larger cities. We suggest withdrawing/exchanging your money in larger cities as facilities can be limited when travelling to smaller towns. Your National Escort will be able to assist you to do this when on tour.

- South Korea – the local currency is known as the Korean WON
- Japan – the local currency is known as the Japanese Yen
- Cruise – A Cruise Card will be issued on embarkation for all purchases on board. The balance of the Cruise Card is to be paid in USD when disembarking

TRANSFERS:

As we offer our customers a variety of airlines to suit your needs, passengers will arrive/depart in Japan at various times during the day. Depending on the number of customers arriving/ departing on the same flight as yourself, the type of transfer to your hotel/ airport will vary.

You will always be met on arrival by English-speaking staff and transferred to your hotel either by:

- Direct shared bus (shared with other passengers, not just Wendy Wu Tours clients)
- Shared bus plus taxi from the nearest bus stop to the hotel (maximum 5-minute walk)
- Chartered coach (if there are more than 8 Wendy Wu Tours passengers arriving at the same time)

On the departure day, all passengers will be met by English-speaking staff at the hotel and transfer by one of the three ways above.

For those passengers using a shared bus or shared bus plus taxi to the airport, the guide services end when they drop you off at the bus stop, and you will need to check in at the airport on your own. If you have paid extra for a private transfer, the above does not apply.

Please ensure your Wendy Wu Tours luggage tag is visible on your suitcase/hand luggage, as this may also assist your guide in identifying you. If at any stage you are unable to locate your representative, please contact our Japan ground operator on the number included in your final documents.

You will meet your National Escort at the welcome dinner or, if arriving late, the following morning after breakfast at the welcome meeting.

ACCOMMODATION PRE & POST CRUISE:

Your accommodation has been selected for convenience of location, comfort, or character, and can range from a business hotel in one city to a family-run guesthouse in a smaller town or a heritage-type hotel. In remote areas, accommodation may be of a lower standard and may not have western amenities. Hotels are generally rated as local three to four-star standard but do please note that there is no international classification system for hotels and differences in facilities and quality do exist between New Zealand and Japan.

Due to environmental regulations not, all hotels provide toiletries in the rooms. Rest assured that all hotels used by Wendy Wu Tours are regularly inspected by our staff and our partners to ensure that standards are met.

All hotels have private western bathroom facilities, TV, and a telephone. Plumbing and electricity supplies can be erratic and quite often the power in hotel rooms is turned off while guests are out of the room. If you experience any difficulty, please speak to your Local Guide or National Escort.

Please be aware that there are heightened security measures being carried out at all hotels, on guests and vehicles entering the properties.

Japan: Please note that in Japan, hotel rooms and bathrooms are renowned for being small. Standard single rooms are usually smaller than a standard double or twin room, contain one small double bed (or one single bed), and are designed for one person to use. In the Fuji area, hotels tend to be more traditional in style and culture. In this area, you may be asked to take your shoes off at the door and store them in a secure locker – this is very traditional Japanese culture.

CRUISE ACCOMODATION AND CABINS:

At the time of booking, subject to availability you may have the choice to book from an outside cabin or balcony cabin. Should you wish to upgrade to a suite or have a special request for cabin location, please speak to our reservations department who will be able to assist.

TRANSPORT:

Coaches: Coaches with air conditioning are used on our group tours for city sightseeing, short excursions to the countryside and longer transfers where necessary.

Roads in Japan are extremely well maintained and are comparatively smooth compared with the rest of Asia. Coaches and mini buses do not have onboard toilet facilities, however frequent bathroom stops are made for passengers comfort.

Bullet trains: Second class reserved seats are booked for our groups on bullet trains; there will be toilet facilities on board. Due to the limited space on bullet trains, a separate luggage transfer service will be arranged for all suitcases (1 case per person). You will need to pack a separate overnight bag to carry on the train as your suitcase will not arrive until the following day after a bullet train journey. Your guide will indicate when you will need to prepare for this throughout your tour.

EATING IN SOUTH KOREA & JAPAN:

On this tour you will get to experience a variety of dining options. Pre and post cruise in Tokyo you will dine as a group, whereas during the cruise, you will dine independently. You will have the option to dine in the main on-board restaurants included as standard in your cruise package. Alternatively, you can opt to dine in the on-board specialty venues or restaurants on land, both of which will be payable locally.

Korean and Japanese cuisine is delicious, colourful and healthy. Meals in South Korea are usually served with a bowl of rice and a bowl of soup and consist generally of banchan (side dishes) including Kimchi (seasoned and fermented vegetable), fish and meat. In Japan, meals are usually served with a bowl of rice and a bowl of miso soup and consist usually of fish, pickled vegetables and meat. Japan's other main staple is noodles, most famous being Udon and Soba. Most food is eaten with chopsticks so best get practicing as cutlery is not always available at restaurants.

In South Korea, the restaurants operate differently than other Asian countries. If you want a desert, you must go to a desert shop. If you want a coffee, you must go to a coffee shop etc.

In Japan, breakfast will mostly be buffet style but may be a set-menu. Lunches are mostly pre-set options as is custom in many local restaurants. Dinner is usually a pre-set option or buffet-style, featuring a wide selection of high-quality Japanese and Western dishes, but may occasionally be a set-menu. We usually find this style of dining suits the wide and varied tastes of our customers on tour. These are also pre-booked in advance prior to your arrival by your guides. This will provide greater flexibility and allow you to sample a broad range of local cuisines and dishes. All beverages will be at your own expense and are readily available.

When eating lunches and dinners, you will usually be seated around a large table with other tour members. Dishes will be served in the traditional 'family style'; meaning that various dishes will be

laid out in the centre of the table. These dishes are intended to be shared amongst the group – there is always more than enough to feed everyone.

Dishes served in restaurants on our group tours are varied. Some will be vegetable-based with meat mixed in, and a few will be meat-based. Our restaurants are aware of the western palate – there are plenty of non-spiced options.

Pre and Post Cruise - When eating lunches and dinners, you will usually be seated around a large table with other tour members. Dishes will be served in the traditional ‘family style’; meaning that various dishes will be laid out in the centre of the table. These dishes are intended to be shared amongst the group – there is always more than enough to feed everyone. All beverages will be at your own expense.

Pre and Post Cruise - On some days where lots of sights are covered, dinner times may be early and your tour group may head directly to the restaurant after sightseeing without stopping at your hotel to freshen up.

Please note: if you have any dietary requirements, you must inform us before your tour starts, and please be aware that restaurants may not always be able to accommodate these. It is recommended that passengers with food intolerances bring snacks or additional food items with them, especially when travelling further from major cities as not all dietary requests will be met due to the limited foods available.

DEVELOPMENT IN SOUTH KOREA AND JAPAN:

South Korea and Japan are developed countries and as such matches the West in modernity and technological advances. South Korea and Japan are extremely safe country and takes great responsibility in maintaining high safety standards.

GROUP SIZE:

Most of our groups consist of 10 travellers or more and will be accompanied by a national escort. There will usually be no more than 28 travellers in each group although you may encounter other Wendy Wu tour groups while you are travelling.

All our departures are guaranteed to operate with a minimum of 8 travellers booked (unless cancelled due to factors beyond our control). A national escort will accompany each group of 10 or more. However, at our discretion we may operate departures with a smaller group size as we try to operate advertised departures wherever it is viable to do so.

CULTURAL DIFFERENCE:

Korean and Japanese society and culture are built on intricate social etiquette and customs. As foreigners, we are not expected to be knowledgeable about all etiquette, but it will make your time in South Korea and Japan more enjoyable if you are respectful of local customs.

Some examples of scenarios you may encounter include removing your shoes and hats when entering a temple or house (some restaurants as well). You may be supplied with slippers at some places, but please come prepared with plenty of spare socks, and shoes that are easy to take off for the fairly regular occasions when they must be removed. Your National Escort will advise you of some of these other customs at the beginning of your tour.

PUBLIC HOLIDAYS:

If you are travelling within the below Public Holidays, please note that celebrations can last a several days and during these times some businesses will be closed. Coach, air and train travel may also be affected. Tourist attractions will be open; but may be crowded.

South Korea: Buddha's Birthday and Children's Day is 5th May 2025.

Japan: Showa Day is on 29th April every year, 'Golden Week' public holidays fall annually at the end of April/beginning of May and Constitution Memorial Day is on 3rd May.

SOUVENIRS:

We want to be able to give you an opportunity to buy souvenirs, so we include some stops at museums or exhibitions which demonstrate a craft or product unique to that region with pieces available to buy. We understand that souvenir hunting is not for everyone, so we aim to take you to places, which hold local interest. We trust you will enjoy these opportunities to learn about local arts and crafts and understand their historical and cultural importance.

LUGGAGE:

All travellers are limited to two items of luggage each: a suitcase with a maximum weight of 20kg and one piece of hand luggage with a maximum weight of five kilograms. It is essential that your luggage is lockable.

PERSONAL EXPENSES AND OPTIONAL TOURINGS:

Personal Expense - You will need to take some extra money to cover drinks, laundry and souvenirs, plus any additional sightseeing that may be offered to you.

Optional Tours - May be offered in each city you visit during your pre and post cruise tour. These are not included in the standard itinerary and will only be available if time permits and if seats are available.

Please ensure you have additional funds available if you feel you may wish to participate in any extra activities. Each option will be arranged locally by your National Escort/Local Guide, participation and tipping for optional excursions is completely at your discretion

Cruise Optional Excursions: Any optional excursions offered at each port will be at your own expense. You can book your shore excursions in advance or during your time onboard the cruise ship.

CLIMBING STEPS:

Sightseeing at nearly all the palaces, fortresses and some temples involves climbing quite a number of steps. These palaces were built to provide defence against potential invaders so nearly all of them stand on top of a hill, while the interiors have layers of narrow hallways and steps to slow down the advance of enemies once they were inside. The steps tend to be quite large, not level and sometimes without handrails.

Buddhist temples or pagodas also tend to be built at an elevation, as this is the most auspicious position according to ancient beliefs. This means you sometimes need to walk from the bus park to the entrance, and/or need to climb some steps inside.

People with knee or hip injuries who have poor balance or are otherwise unable to complete these activities independently should consider the suitability of this itinerary carefully.

VACCINATIONS AND YOUR HEALTH:

We recommend that you contact either your Doctor or Health centre for advice on vaccinations and travel health. Safetravel has a comprehensive website that you may also find useful www.safetravel.govt.nz

BEFORE YOU LEAVE:

We strongly recommend registering your travel plans with www.safetravel.govt.nz as in the event of an emergency, New Zealand Consular assistance will be more readily available.

Up until the day you travel, it is vital you keep up to date and familiarised with the entry requirements as these can change at short notice. You are personally responsible for completing any entry forms, conducting any covid tests (if necessary), etc and adhering to countries' specific entry requirements.

You can also access the New Zealand Government's travel advisory service for up-to-date information about your destination on the same website.

AFTER YOUR BOOKING:

Once you have booked with Wendy Wu Tours, you will receive a confirmation invoice including a visa application form (if applicable), and a help sheet. Your final documentation pack will be sent to you approximately 2-3 weeks prior to departure.

Updated: June 2024